

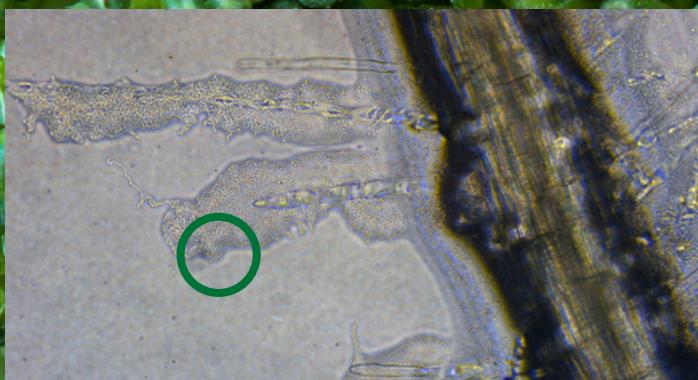


SERENADE[®]
prime

Local Broccoli Results

'It all starts here'...

Serenade[®] Prime is a beneficial bacteria that colonises broccoli roots. It creates a win-win relationship with the plant at the soil interface, improving nutrient availability. Frequently this results in improved harvest uniformity.



Serenade Prime colonising the root

Early Application

Serenade Prime is best applied close to the root zone at planting so it quickly colonise young roots. It needs to be placed no further than 13cm from roots.

Apply **5-7 L/ha** through a plant hole drench or as a boom spray over the bed using overhead irrigation to incorporate into the root zone. It can be mixed with common fertilisers and pesticides.



Standard Practice

+ Serenade Prime

Better broccoli establishment, Toowomba Qld

Harvest Uniformity

Windolf Farms, Gatton Qld improved yield of *Aurora* by over 12%. Greater early vigor (below) and earlier head maturity was observed in the July planting, and better uniformity in the first three picks.



Weight (kg) by harvest round June 2016.

